



BOTSWANA EXPLORER

Hosted by: Lindsay Scott & Brian McPhun

August 2017

Limited Participation (8 Guests) - Reserve Your Space Now

For more information, contact Lindsay or call Alana in the U.S. at the number below:

Over 40 Years of Experience in Creating Exceptional Journeys to All of Africa

(800) 4-SAFARI [472-3274] | (747) 888-3308



Over 40 Years of Experience in Creating Exceptional Journeys to All of Africa

(800) 4-SAFARI [472-3274] | (747) 888-3308

JOURNEY AT A GLANCE

DAY 2017	LOCATION	ACCOMMODATION	MEALS
03 Aug	Depart Home – Fly to Africa	--	--
04 Aug	Arrive Johannesburg, South Africa	Intercontinental Johannesburg Hotel	--
05 Aug	Fly to Botswana – Chobe / Savute	Savute Safari Lodge	B-L-D
06 Aug	Chobe National Park / Savute Channel	Savute Safari Lodge	B-L-D
07 Aug	Chobe National Park / Savute Channel	Savute Safari Lodge	B-L-D
08 Aug	Okavango Delta -- Moremi Game Reserve	Camp Xakanaxa	B-L-D
09 Aug	Okavango Delta -- Moremi Game Reserve	Camp Xakanaxa	B-L-D
10 Aug	Okavango Delta -- Moremi Game Reserve	Camp Xakanaxa	B-L-D
11 Aug	Okavango Delta - North	Shinde Camp	B-L-D
12 Aug	Okavango Delta - North	Shinde Camp	B-L-D
13 Aug	Fly to Johannesburg / Int'l Departure	--	B
OPTIONAL VICTORIA FALLS EXTENSION:			
2 Nights	Victoria Falls, Zimbabwe	The Elephant Camp	B&B
OPTIONAL CAPE TOWN PRE or POST SAFARI:			
4 Nights	Cape Town, South Africa	Cape Cadogan Hotel	B&B



Over 40 Years of Experience in Creating Exceptional Journeys to All of Africa

(800) 4-SAFARI [472-3274] | (747) 888-3308

03 AUG 2017 – DEPART HOME

Start your adventure today departing from your home city for your flight to Africa (not included). Cape Town can be visited before or after your safari. There will be no need to stay in Johannesburg if you stay in Cape Town – there are flights directly to Maun and via Johannesburg (not included in cost).

04 AUG – ARRIVE JOHANNESBURG, SOUTH AFRICA

Accommodations: Intercontinental Johannesburg Hotel

Touch down in Johannesburg, South Africa. Once through customs and immigration, you will proceed to the hotel. The Intercontinental is located just outside the arrival hall door!

Website: [http://wetu.com/iBrochure/en/Home/2882_9413/InterContinental Johannesburg OR Tambo Airport](http://wetu.com/iBrochure/en/Home/2882_9413/InterContinental_Johannesburg_OR_Tambo_Airport)

05-07 AUG – SAVUTE CHANNEL (CHOBE NATIONAL PARK), BOTSWANA

Accommodations: Savute Safari Lodge

Good morning! Today you will depart on a flight to Maun, Botswana where you will connect on your scheduled charter flight (included) to your first Botswana lodge in the Savute Channel area of Chobe National Park.

You'll spend three nights at the **Savute Safari Lodge**. All suites have private decks, combined bedroom, and sitting areas and en-suite facilities. The sitting area, library, and cocktail bar are situated in an exquisite thatch and timber main building. While at Savuti, you will spend time on game drives, which take place in open 4x4 vehicles in the Savute area, including the famous Savute Marsh. Included is a visit to the ancient San rock paintings at Gubatsa Hills.

The Savute Channel is very mysterious – it will go dry for decades at a time with no known reason. How the Savute gets its water has remained mystery even to scientists. Leopards are seen around the granite. Old bull elephants are often found in the Savuti area. Good sightings of cheetah and leopard are possible, and the endangered wild dog also occurs here. Birdlife is also amazing with large secretary birds and kori bustards often seen around the Savuti Marsh. Summer migrants and water birds include Abdim's Storks bee eaters, fish eagles, quelea finches.



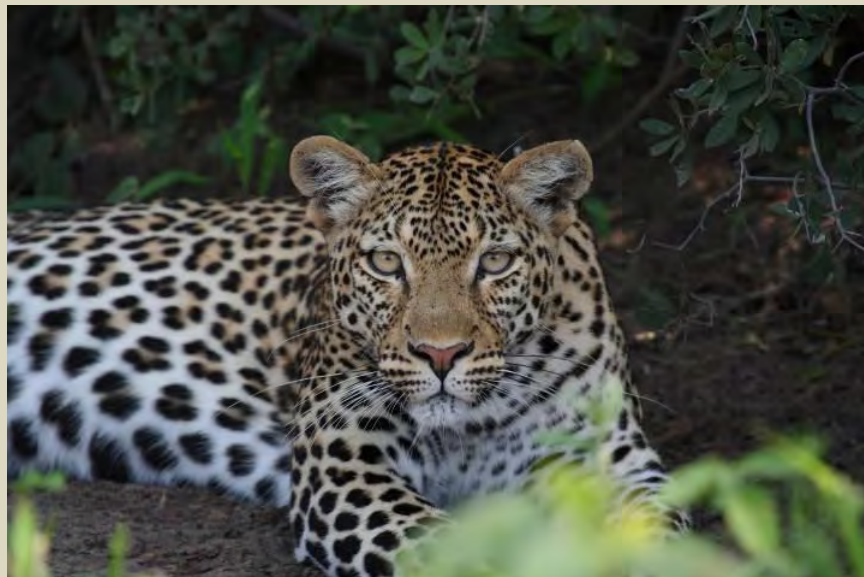
Meals: Breakfast, Lunch, Dinner

Included Activities: Morning & Afternoon Game Drives, Visit to ancient San rock paintings at Gustaba Hills

Website: [http://wetu.com/iBrochure/en/Home/2882_18117/Savute Safari Lodge](http://wetu.com/iBrochure/en/Home/2882_18117/Savute_Safari_Lodge)

Over 40 Years of Experience in Creating Exceptional Journeys to All of Africa

(800) 4-SAFARI [472-3274] | (747) 888-3308



Over 40 Years of Experience in Creating Exceptional Journeys to All of Africa
(800) 4-SAFARI [472-3274] | (747) 888-3308

08-10 AUG – MOREMI GAME RESERVE (OKAVANGO DELTA)

Accommodations: Camp Xakanaxa

Today you will fly via scheduled charter flight (included) on to the Moremi Game Reserve and your camp for the next three nights. At the point where the life-giving waters of the Okavango Delta meet the vast plains of the Kalahari Desert, Mother Nature has created a sanctuary of Mopane forests, open grasslands, seasonal floodplains and riverine habitats, resulting in one of the most magnificent and welcoming animal environments in all of Africa. It is considered to be the most beautiful wildlife sanctuary in Africa.

Camp Xakanaxa is authentic bush camp that blends harmoniously with nature, providing guests with exceptional comforts and extraordinary experiences. Set on raised wooden platforms under the shade of towering trees, Xakanaxa's thatched dining room, lounge/bar area, curio shop, fire deck and a new swimming pool provide a restful sanctuary with magnificent river views. Located in the heart of the Moremi Game Reserve, the camp is set on the banks of the pristine Khwai River that overlooks the Xakanaxa Lagoon.

The ancient riverine forests, open savanna, serpentine channels as well as seasonal floodplains which surround the camp, make for a varied habitat of exceptional fauna and flora. The camp is one of few offering a year-round land and water game viewing experience in open land rovers, powerboats or dug-out canoes, known locally as mokoros. The diverse habitat ensures prolific sightings of elephant, buffalo, wild dog, hyena, giraffe, hippo, wildebeest, kudu, lechwe, lion, leopard and cheetah, amongst others. In a historic move, Moremi was established by the BaTswana people to protect the regions wildlife. It is home to huge herds of Elephant and the endangered African Wild Dog. It supports one of the greatest concentrations of wildlife in Africa. While in Moremi, you'll explore the area both on land and water. The birdlife – which ranges from water birds to shy forest dwellers - is prolific and varied, and each boat trip affords guests exceptional bird-watching opportunities.

Meals: Breakfast, Lunch, Dinner

Included Activities: Morning & Afternoon Game Drives, Motorboat Exploration of Okavango Delta

Website: http://wetu.com/iBrochure/en/Launch/2882_20353/Camp_Xakanaxa/Landing



Over 40 Years of Experience in Creating Exceptional Journeys to All of Africa

(800) 4-SAFARI [472-3274] | (747) 888-3308



Over 40 Years of Experience in Creating Exceptional Journeys to All of Africa
(800) 4-SAFARI [472-3274] | (747) 888-3308



11-12 AUG – OKAVANGO DELTA, NORTH

Accommodations: Shinde Camp

Today you again be flown north via charter flight (included), and discover the lush palm island on the edge of Shinde Lagoon, in the heart of the northern Okavango Delta. The Lagoon has animal and birdlife. Shinde's excellent location in the Okavango Delta ensures a combination of permanent water access for year-round water activities and large dry areas for game drive routes. It is a mix of deep-water lagoons and channels, shallow floodplains, and stands of hardwood forest. This blend of environments provides the habitat for a consistently wide variety of wildlife, including the elusive sitatunga antelope. Shinde is situated on a private concession which allows guided walks, Mokoro excursions and night drives in addition to game drives and motorboat trips.

The elegance and historical charm of the iconic **Shinde Camp** has eight classic safari tents spacious bathrooms and large walk in shower. Wide sliding doors leading onto the extended front decks afford breath-taking views over the open floodplains or the mysterious waterways of the Delta. Each tent is strategically positioned to offer splendid views, whether across the Okavango Deltas mysterious waterways or open grasslands. Shinde is situated on a private concession which allows guided walks, Mokoro excursions and night drives in addition to game drives and motorboat trips. The camps unique main area comprises a multi-tiered dining room and lounge which is set under canvas under the shade of ebony and mangosteen trees.

Meals: Breakfast, Lunch, Dinner

Included Activities: Morning, Afternoon and Night Game Drives, Motorboat Exploration of Okavango Delta, Mokoro (Canoe) Safaris, Walking Safaris, Fishing (Seasonal)

Website: http://wetu.com/iBrochure/en/Launch/2882_18249/Shinde_Camp/Landing

Over 40 Years of Experience in Creating Exceptional Journeys to All of Africa

(800) 4-SAFARI [472-3274] | (747) 888-3308

13 AUG – ONWARD JOURNEY, OR...

This morning, after breakfast, bid a fond farewell to Botswana as you are flown via scheduled charter flight (included) to Kasane for your onward arrangements. This may be where your adventures in Africa complete, or you may continue on one of the below offered extensions.

Meals: Breakfast

EXTENSION TO VICTORIA FALLS

DAY 01 – ARRIVE VICTORIA FALLS, ZIMBABWE

Accommodations: The Elephant Camp

Touchdown today in Victoria Falls, Zimbabwe. On the Zimbabwean side of the Victoria Falls, **The Elephant Camp** is located on its own private concession within Victoria Falls National Park and is a 15 minute drive from Victoria Falls town and the waterfall itself. The camp is situated on a rise overlooking the national park and features panoramic views of the Falls' spray and the Batoka Gorge which separates Zimbabwe from Zambia.

Each of the 12 tented suites is furnished with comfortable king/twin beds with mosquito net, separate lounge area with coffee table, settee and chair, a writing desk and private viewing deck with a plunge pool. The en-suite facilities include a flush toilet, hand basin, bath tub and indoor and outdoor shower. Other room amenities include air-conditioning, ceiling fan, well-stocked mini-bar, tea/coffee making facilities, two-way communication radios and complimentary toiletries. The main guest area of the camp has a large lounge with several seating areas, a dining area, central bar and a large wooden deck and swimming pool.

Meals: Breakfast, Lunch, Dinner

Website: http://wetu.com/iBrochure/en/Home/2882_23793/The_Elephant_Camp



Over 40 Years of Experience in Creating Exceptional Journeys to All of Africa

(800) 4-SAFARI [472-3274] | (747) 888-3308

DAY 02 – VICTORIA FALLS

Accommodations: The Elephant Camp

This morning arrangements will be made for you to have a half day shared tour of the Victoria Falls on the Zimbabwean side of the Falls. Described by the Kololo tribe living in the area in the 1800's as 'Mosi-oa-Tunya' - 'the Smoke that Thunders' and in more modern terms as 'the greatest known curtain of falling water', Victoria Falls are a spectacular sight of awe-inspiring beauty and grandeur on the Zambezi River, bordering Zambia and Zimbabwe.

While it is neither the highest nor the widest waterfall in the world, it is claimed to be the largest. This claim is based on a width of 5,604 ft. and height of 354 ft., forming the largest sheet of falling water in the world. Victoria Falls is roughly twice the height of North America's Niagara Falls and well over twice the width of its Horseshoe Falls. In height and width Victoria Falls is rivaled only by South America's Iguassu Falls. The volume of water falling over the falls is seasonal and each season has its merits.

This afternoon, you are in for a real treat, seeing the Fall from a birds-eye view. After takeoff the helicopter turns out towards the magnificent Victoria Falls, where the pilot will give you multiple views of the Falls giving you the best viewing, photographic and filming opportunities. A trip up the Zambezi River and back over the Zambezi National Park completes your flight. Afterwards, head to a local village where you can meet local villagers going about their daily activities, do a little shopping and see rural Zimbabwean life first hand.



Meals: Breakfast, Lunch, Dinner

DAY 03 – ONWARD JOURNEY, OR...

Over 40 Years of Experience in Creating Exceptional Journeys to All of Africa

(800) 4-SAFARI [472-3274] | (747) 888-3308

EXTENSION TO CAPE TOWN, SOUTH AFRICA

DAY 01 – CAPE TOWN, SOUTH AFRICA

Accommodations: Cape Cadogan Boutique Hotel – alternative

Today you will fly to South Africa via Johannesburg to Cape Town. Once through airport formalities you will be met in the arrivals hall by a local representative with a board showing your name and escorted to your accommodations. Relax and enjoy your first evening in South Africa.

Meals: Breakfast

Website: http://wetu.com/iBrochure/en/Photos/2882_11891/Cape_Cadogan_Boutique_Hotel



DAY 02 – CAPE TOWN

Accommodations: Cape Cadogan Boutique Hotel

This morning you will be picked up at your hotel for a private half day orientation tour of Cape Town, including Table Mountain. Take a step back in time and explore the “Mother City” – its views, its history and its people. Highlights of the tour include an orientation of the city, Table Mountain (weather permitting) or Signal Hill, the Castle of Good Hope – Cape Town’s first fort – the oldest market in town - Green Market Square, Bo-Kapp in the traditional Malay Quarter, the South African Museum and the Flower Market. Afterward you can be dropped back at your accommodations or if you prefer you may enjoy some time in the waterfront area. Table Mountain last cable car down at 6pm.

Included Activities: Private half day tour of Cape Town City and Table Mountain

Meals: Breakfast

Over 40 Years of Experience in Creating Exceptional Journeys to All of Africa

(800) 4-SAFARI [472-3274] | (747) 888-3308



DAY 03 – CAPE TOWN – CAPE PENINSULA & WINELANDS

Accommodations: Cape Cadogan Boutique Hotel - 5 nights

After breakfast, head out on a private full day tour of the Cape Peninsula. This journey follows along the scenic Atlantic seaboard coastal road passing the pristine beaches of Clifton and Camps Bay with their soft white sand and azure blue water. The formidable 12 Apostles Peaks rise above the road on one side, while sheer cliffs and incredible rock formations drop into the icy Atlantic Ocean on the other side. Continue over Chapman's Peak which offers amazing photo opportunities, and onto the Cape of Good Hope Nature Reserve. There is no doubt the coast of the Cape peninsula offers magnificent scenery and incredible biodiversity. Drive through the historic naval base, Simon's Town, with a visit to the penguin colony at Boulders. Penguins are flightless, aquatic birds, which live in the southern oceans in climates as varied as Antarctica and the Galapagos Islands on the equator. There are seventeen species in all but the African Penguin is the only one to inhabit the African continent and its inshore islands. It used to be known as the Jackass Penguin, on account of the braying sounds which it makes on land, but the name 'African Penguin' has now been adopted to distinguish it from the Jackass Penguin found in South America, which is slightly different in appearance and behavior.

Included Activities: Private full day Cape Point Tour

Meals: Breakfast



Over 40 Years of Experience in Creating Exceptional Journeys to All of Africa

(800) 4-SAFARI [472-3274] | (747) 888-3308



DAY 04-05 – CAPE TOWN

Accommodations: Cape Cadogan Boutique Hotel

All touring will be designed around your special interests. Included in this quotation is the most popular sites.



SUGGESTED TOURING IN CAPE TOWN

- **Victoria & Alfred Waterfront** – is a working harbor, bustling with activity, restaurants, shopping, and entertainment.
- **Greenmarket Square** – is an open-air flea market, since 1710.
- **Robben Island** –Mandela was imprisoned here, now a museum.
- **District Six Museum** – is a must-see for anyone interested in South Africa's period of apartheid, which ended in 1994.
- **Groot Constantia** – has a wine museum, restaurants, and free tastings in an historic wine estate.
- **Cape of Good Hope Nature Reserve** - Cape Point, Penguins and Kirstenbosch Gardens.
- **Woodstock Art District** – growing local art district.
- **Camps Bay and Clifton Beaches** – Popular beaches
- **Wine Country and Historic Region**

DAY 06 – INTERNATIONAL DEPARTURE

Today you will be driven to the airport for your international flight home – taking with you the photos, memories, and experiences that only Africa can provide.

Meals: Breakfast

Over 40 Years of Experience in Creating Exceptional Journeys to All of Africa

(800) 4-SAFARI [472-3274] | (747) 888-3308

SAFARI TARIFF - December 22, 2016 – shown in USD

Total Cost per person, double occupancy - payment by check or wire transfer \$12,320
Payment by credit card \$12,754

Deposit paid by check \$3,800 per person – to be deducted from full amounts shown above.

OPTIONS AS SHOWN

• SOUTH AFRICA – CAPE TOWN -	Payment by credit card	\$ 1,023
	Payment by check	\$ 988
VICTORIA FALLS SEGMENT AS SHOWN	Payment by credit card	\$ 1,300
	Payment by check	\$ 1,279

International Air quotes available – coach and business class

Internal flights required will depend on the options you require.

Air Johannesburg-Maun; Vic Falls-Johannesburg approximately \$390 per person and subject to change

IMPORTANT: The price quoted is subject to change in the event of any unforeseen increases in fuel and/or currency fluctuations

GENERAL INCLUSIONS:

BOTSWANA

Internal flights: Maun to Savute Safari Lodge; Savute to Camp Xakanaxa; Xakanaxa to Shinde; Shinde to Kasane

Luggage is restricted to duffle style 44 pounds in soft bags

All meals at Savute, Xakanaxa, and Shinde

ZIMBABWE-VIC FALLS Road transfer from Kasane - Elephant Camp-Victoria Falls Airport

Sundowner cruise at Elephant Camp; All meals at Elephant Camp

CAPE TOWN - Meals: Breakfast throughout; Transfers and touring in Cape Town as per itinerary including all related entrance fees; Accommodation: Cape Cadogan – Luxury Room

- All accommodation on a shared basis; Meals as specified; drinks included in Botswana camps (non premium liquors)
- Most safari camps/lodges include two game activities per day in their rate – one in the morning and the other in the afternoon. Private activities and guide may be booked, at an additional cost, for sole use or special interest activities. Please advise if you would like additional information on this service;
- Services of the camp/lodge guides and staff;
- Relevant park fees and entrance fees as specified in the quote;;
- Laundry can be done at most camps/lodges and hotels. In some cases this is included in the rate as quoted;
- Accommodation taxes, the applicable Tourism Levies and all relevant Value Added Tax (VAT) or Government Sales Tax

EXCLUSIONS:

- International airfares and airfares such as Johannesburg-Maun; Vic Falls-Johannesburg; to/from Cape Town
- Any drinks, park fees, entrance fees, portorage, tours/excursions and transfers not specified in the quote;
- Cancellation, baggage and medical insurance; Staff gratuities;
- Visa fees where relevant, according to your itinerary and country of original/residency/passport – visa maybe required for South Africa, Zimbabwe, Zambia, Botswana; Departure Taxes (applicable at manned airports only) in Zambia and Zimbabwe, which are to be paid direct in cash on departure, unless included in your air ticket cost;
- Any items of a personal nature.

Over 40 Years of Experience in Creating Exceptional Journeys to All of Africa

(800) 4-SAFARI [472-3274] | (747) 888-3308



Lindsay Scott-Brian McPhun Safari Scan/email: nancy@bfsafaris.com OR fax: 720-974-5901

Mail deposit of \$3800 per person for number of participants to our corporate office:

11941 W 48th Ave. #100 Wheat Ridge, CO 80033 720-974-5905

Scan/email: nancy@bfsafaris.com OR fax: 720-974-5901

UPON RECEIPT OF THIS APPLICATION WE WILL SEND OUT AN INVOICE CONFIRMATION

Please sign _____ guests for the Botswana segment of this trip _____

Please sign _____ guests for the Victoria Falls segment of this trip _____

Cape Town - I would like to go to Cape Town prior to safari _____

Cape Town – call me about alternate arrangements and coordinate of my trip with the safari

USE ONLY IF YOU WOULD LIKE TO USE CREDIT CARD

Authorization to charge as of: _____ Date _____

Credit Card Authorization Form (MasterCard, Visa, Discover, and American Express)

I (the undersigned) do hereby give Born Free, Inc. or their agent permission to charge the below listed credit card as payment for safari arrangements _____ Initial _____

Type of Credit Card: _____ Expiration Date: _____

Credit Card Number: _____

V-Code (located on back of card) _____

Amount authorized to be charged now: \$ _____

Amount authorized to be charged on the date final payment is due: \$ _____

Total amount authorized to be charged to the above account: \$ _____

I understand that the charge may appear on my statement under the name of Born Free Inc and/or the airline which I am traveling on. In certain cases a credit card charge may appear from a different airline than what you are traveling on. I have read, fully understand and agree with the Born Free, Inc confirmed services as shown on the invoice, limits of responsibility and waiver. By signing below, I acknowledge and agree with the full charges described. If you have any questions regarding your bill, please call our offices prior to disputing the charges. _____ Initial _____

Name as it appears on your card: _____
(please print)

Billing Address: _____

City: _____ State _____ Zip Code _____

Phone number _____

Card Holder's Signature: _____

Any faxed signatures will be taken as an original signature.

Over 40 Years of Experience in Creating Exceptional Journeys to All of Africa

(800) 4-SAFARI [472-3274] | (747) 888-3308